

# Laporan Statistik 2024

## 2024 Statistic Report





# Distribusi Batubara

## Coal Distribution

### Realisasi Pasokan Batubara (Metrik Ton)

Realization of Coal Supply (Metric Tons)

No.	PLTU (PLN GRUP DAN IPP) CFPP (PLN Group's and IPP)	2022	2023	2024
1.	PLTU Pangkalan Susu	563.763	2.920.951	3.026.946
2.	PLTU Labuhan Angin	130.525	537.781	806.252
3.	PLTU Tanjung Balai Karimun	92.785	74.642	121.038
4.	PLTU Tenayan	203.304	737.790	866.153
5.	PLTU Tembilahan	108.097	122.233	112.668
6.	PLTU Galang Batang	7.638	-	-
7.	PLTU Teluk Sirih	272.195	964.466	872.218
8.	PLTU Bangka Baru	262.214	349.756	343.939
9.	PLTU Belitung	155.356	239.902	230.958
10.	PLTU Sebalang (Tarahan Baru)	529.572	1.023.005	779.396
11.	PLTU Tarahan	-	770.516	705.728
12.	PLTU Labuan	278.573	2.263.734	2.632.873
13.	PLTU Suralaya Baru	391.928	1.367.278	2.023.000
14.	PLTU Teluk Naga (Lontar)	433.699	3.993.420	3.955.038
15.	PLTU Pelabuhan Ratu	706.325	4.203.016	4.216.794
16.	PLTU Indramayu	527.257	3.618.127	3.850.576
17.	PLTU Adipala	1.039.362	1.670.819	2.013.704

## Realisasi Pasokan Batubara (Metrik Ton)

Realization of Coal Supply (Metric Tons)

No.	PLTU (PLN GRUP DAN IPP) CFPP (PLN Group's and IPP)	2022	2023	2024
18.	PLTU Tanjung Jati 1-2	767.066	4.093.225	4.226.245
19.	PLTU Tanjung Jati 3-4	172.017	3.532.002	3.625.257
20.	PLTU Rembang	287.635	2.599.408	2.505.568
21.	PLTU Tj Awar-Awar	354.964	2.475.546	2.692.475
22.	PLTU Pacitan	315.101	2.128.763	2.419.734
23.	PLTU Paiton Baru	223.728	2.088.004	2.084.644
24.	PLTU Parit Baru Site Bengkayang	211.519	514.129	481.584
25.	PLTU Sintang	157.640	222.712	173.506
26.	PLTU Sanggau	102.016	116.515	130.869
27.	PLTU Ketapang	152.160	205.777	191.167
28.	PLTU Pulang Pisau	242.949	528.793	569.983
29.	PLTU Berau	100.026	80.056	135.115
30.	PLTU Teluk Balikpapan	74.964	869.375	833.404
31.	PLTU Malinau	22.009	43.922	31.204
32.	PLTU Amurang	44.999	529.337	476.033
33.	PLTU Gorontalo	64.976	195.935	207.747
34.	PLTU Ampana	26.350	42.485	30.570
35.	PLTU Barru	110.341	936.935	455.926
36.	PLTU Punagaya	192.943	1.152.666	822.673
37.	PLTU Kendari	51.698	185.317	155.011





## Realisasi Pasokan Batubara (Metrik Ton)

Realization of Coal Supply (Metric Tons)

No.	PLTU (PLN GRUP DAN IPP) CFPP (PLN Group's and IPP)	2022	2023	2024
38.	PLTU Sumbawa Barat	30.745	77.322	52.787
39.	PLTU Jeranjang	143.988	550.698	458.317
40.	PLTU Kupang	262.697	474.569	291.135
41.	PLTU Tidore	51.265	121.459	92.679
42.	PLTU Jayapura	56.000	62.000	84.000
43.	PLTU Suralaya 1-7	319.932	12.221.385	11.996.554
44.	PLTU Paiton 1-2	204.178	2.054.114	2.775.325
45.	PLTU Tanjung Kasam TJKP	187.193	655.983	548.337
46.	PLTU Jawa 7 SGPJB	1.097.898	7.030.421	7.105.379
47.	PLTU Mamuju	94.832	291.693	215.731
48.	PLTU Kalbar 1	8.002	938.311	975.875
49.	PLTU Celukan Bawang	-	1.285.762	1.758.933
50.	PLTU Jeneponto	-	1.871.829	1.820.061
51.	PLTU Asam-Asam 1-4	-	1.445.720	1.213.792
52.	PLTU Ropa-Ende	-	89.254	110.582
53.	PLTU Ombilin	-	392.362	594.197
54.	PLTU Nagan Raya	-	778.094	784.360
55.	PLTU Bukit Asam	-	922.773	625.942
56.	PLTU Kalselteng 2	-	156.515	417.782
57.	PLTU Timor	-	94.366	115.245



## Realisasi Pasokan Batubara (Metrik Ton)

Realization of Coal Supply (Metric Tons)

No.	PLTU (PLN GRUP DAN IPP) CFPP (PLN Group's and IPP)	2022	2023	2024
58.	PLTU SW ITP	-	37.654	142.124
59.	PLTU Sofifi	-	5.224	-
60.	PLTU Barru 2	-	67.643	504.799
61.	PLTU Banjarsari BPI	-	913.684	737.945
62.	PLTU Keban Agung PME	-	891.059	838.387
63.	PLTU Simpang Belimbing GEMMI	-	1.781.561	1.714.739
64.	PLTU Bengkulu	-	837.907	831.709
65.	PLTU Sumsel-5	-	1.680.242	1.458.518
66.	PLTU Banten LBE	-	2.453.030	2.091.753
67.	PLTU Cirebon CEP	-	1.988.630	2.164.859
68.	PLTU Cilacap Unit 1-2 SSP	-	1.475.387	1.595.217
69.	PLTU Cilacap Unit 3 SSP	-	2.192.691	1.813.046
70.	PLTU Cilacap Unit 4 SSP	-	2.766.231	3.173.950
71.	PLTU Jawa-4	-	6.751.250	6.621.697
72.	PLTU Jawa Tengah BPI	-	4.059.222	5.525.341
73.	PLTU Paiton Unit 5-6 JP	-	3.012.731	3.311.081
74.	PLTU Paiton Unit 378 PEC	-	5.857.528	6.512.531
75.	PLTU Kaltim-2	-	867.518	967.233
76.	PLTU Embalut & Ekspansi	-	252.598	372.607
77.	PLTU Kaltim-4	-	477.642	747.349





### Realisasi Pasokan Batubara (Metrik Ton)

Realization of Coal Supply (Metric Tons)

No.	PLTU (PLN GRUP DAN IPP) CFPP (PLN Group's and IPP)	2022	2023	2024
78.	PLTU Pangkalan Bun	-	29.420	44.500
79.	PLTU Kalteng-1	-	1.072.111	986.550
80.	PLTU Kalsel-1	-	858.706	855.856
81.	PLTU Muara Jawa	-	289.915	276.887
82.	PLTU Moramo Kendari 3	-	577.441	590.461
83.	PLTU Sulut-3	-	208.112	378.193
84.	PLTU Sulbagut-1	-	320.241	459.988
85.	PLTU Lombok LED	-	146.138	254.935
86.	PLTU Baturaja	-	-	272.641
87.	PLTU Sarolangun	-	-	82.845
88.	PLTU Baruta	-	-	114.616
89.	PLTU Bolok 3-4	-	-	7.331
90.	PLTU Jawa 9-10	-	-	370.132
91.	PLTU Jawa-1	-	-	3.174.003
92.	PLTU Lati	-	-	126.343
93.	PLTU Lombok FTP-2	-	-	12.730
94.	PLTU Lontar 4	-	-	591.044
95.	PLTU Meulaboh 3-4	-	-	1.397.671
96.	PLTU Palu-3	-	-	132.369
97.	PLTU Sorong	-	-	-

### Realisasi Pasokan Batubara (Metrik Ton)

Realization of Coal Supply (Metric Tons)

No.	PLTU (PLN GRUP DAN IPP) CFPP (PLN Group's and IPP)	2022	2023	2024
98.	PLTU Sulut-1	-	-	120.646
99.	PLTU Sumsel-1	-	-	-
100.	PLTU Sumsel-8	-	-	2.819.529
101.	PLTU IPP Tersebar	-	405.241	-
<b>Jumlah Total</b>		<b>11.834.422</b>	<b>121.189.722</b>	<b>135.037.164</b>

### Jumlah Pasokan Batubara ke PLTU (Metrik Ton)

Total Coal Supply to CFPP (Metric Tons)

Pelanggan Customer	2020	2021	2022	2023	2024
PLN Grup	24.940.082	19.629.907	10.109.581	66.949.490	69.929.736
<i>Independent Power Producer (IPP)</i>	1.834.662	1.091.841	1.724.841	54.240.232	65.107.428
<b>Jumlah Total</b>	<b>26.774.744</b>	<b>20.721.748</b>	<b>11.834.422</b>	<b>121.189.722</b>	<b>135.037.164</b>

### Jumlah Pasokan Batubara dari Anak Perusahaan dan Afiliasinya (Metrik Ton)

Total Coal Supply from Subsidiaries and Affiliates (Metric Tons)

Pelanggan Customer	2020	2021	2022	2023	2024
PT Jambi Prima Coal	1.471.821	1.173.841	-	836.632	496.446
PT Banyan Koalindo Lestari	523.313	676.246	480.402	1.102.147	1.262.061
PT PLN Batubara Niaga	1.362.870	520.998	1.546.584	8.583.852	11.650.671
<b>Jumlah Total</b>	<b>3.358.004</b>	<b>2.371.085</b>	<b>2.026.986</b>	<b>10.522.631</b>	<b>13.409.178</b>



### Realisasi Jumlah PLTU PLN dan IPP yang Dipasok

Realization of the number of PLN and IPP CFPP Supplied

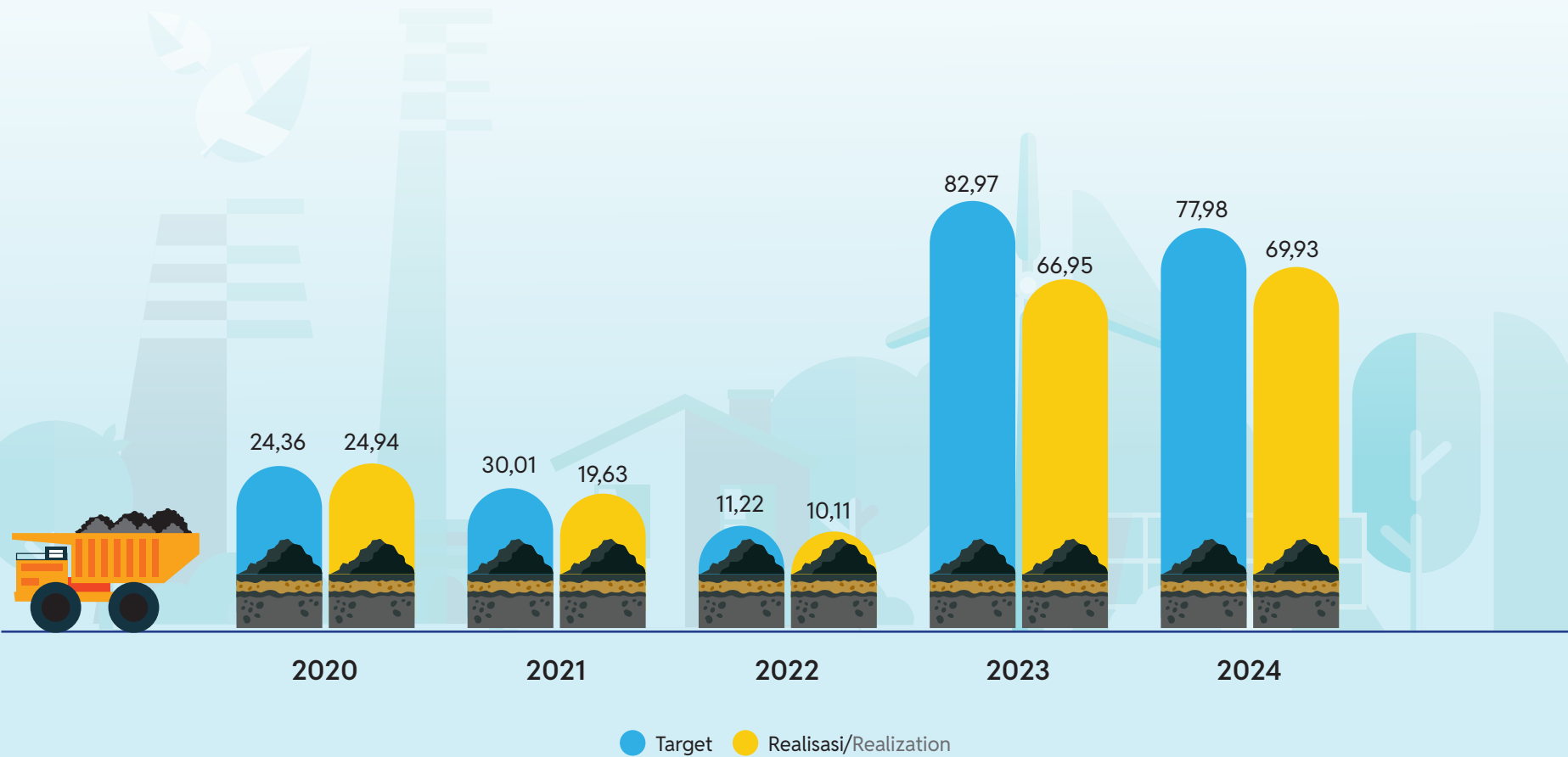
2020	2021	2022	2023	2024
50	51	46	85	101

### Realisasi Pasokan Batubara ke PLTU PLN Grup (Juta Ton)

Realization of Coal Supply to PLN Group's CFPP (Million Tons)

Tahun Year	Target Target	Pencapaian Achievement
2020	24,36	24,94
2021	30,01	19,63
2022	11,22	10,11
2023	82,97	66,95
<b>2024</b>	<b>77,98</b>	<b>69,93</b>

**Grafik Realisasi Pasokan Batubara ke PLTU PLN Grup (Juta Ton)**  
Graph of Realization of Coal Supply to PLN Group's CFPP (Million Tons)





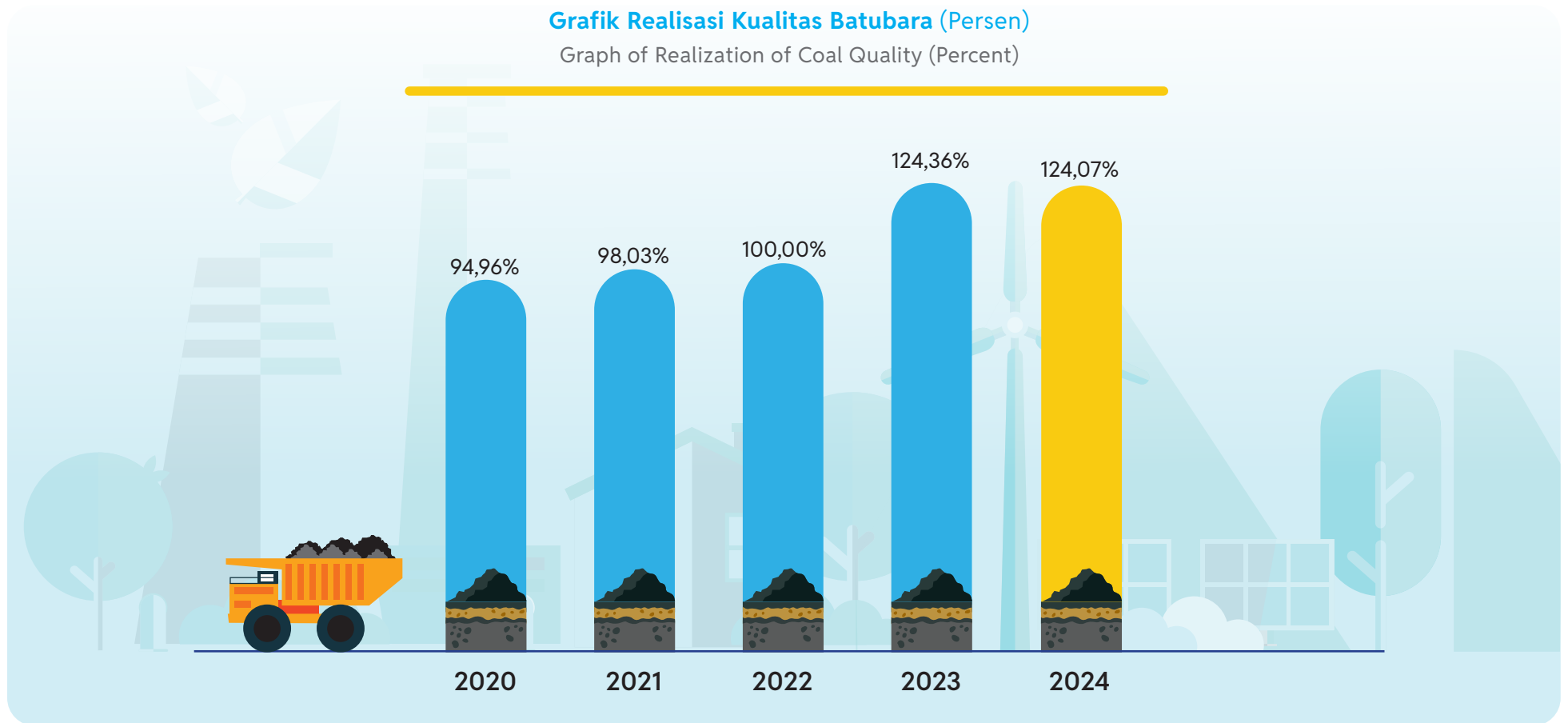
### Realisasi Kualitas Batubara (Persen)

Realization of Coal Quality (Percent)

2020	2021	2022	2023	2024
94,96	98,03	100,00	124,36	124,07

### Grafik Realisasi Kualitas Batubara (Persen)

Graph of Realization of Coal Quality (Percent)



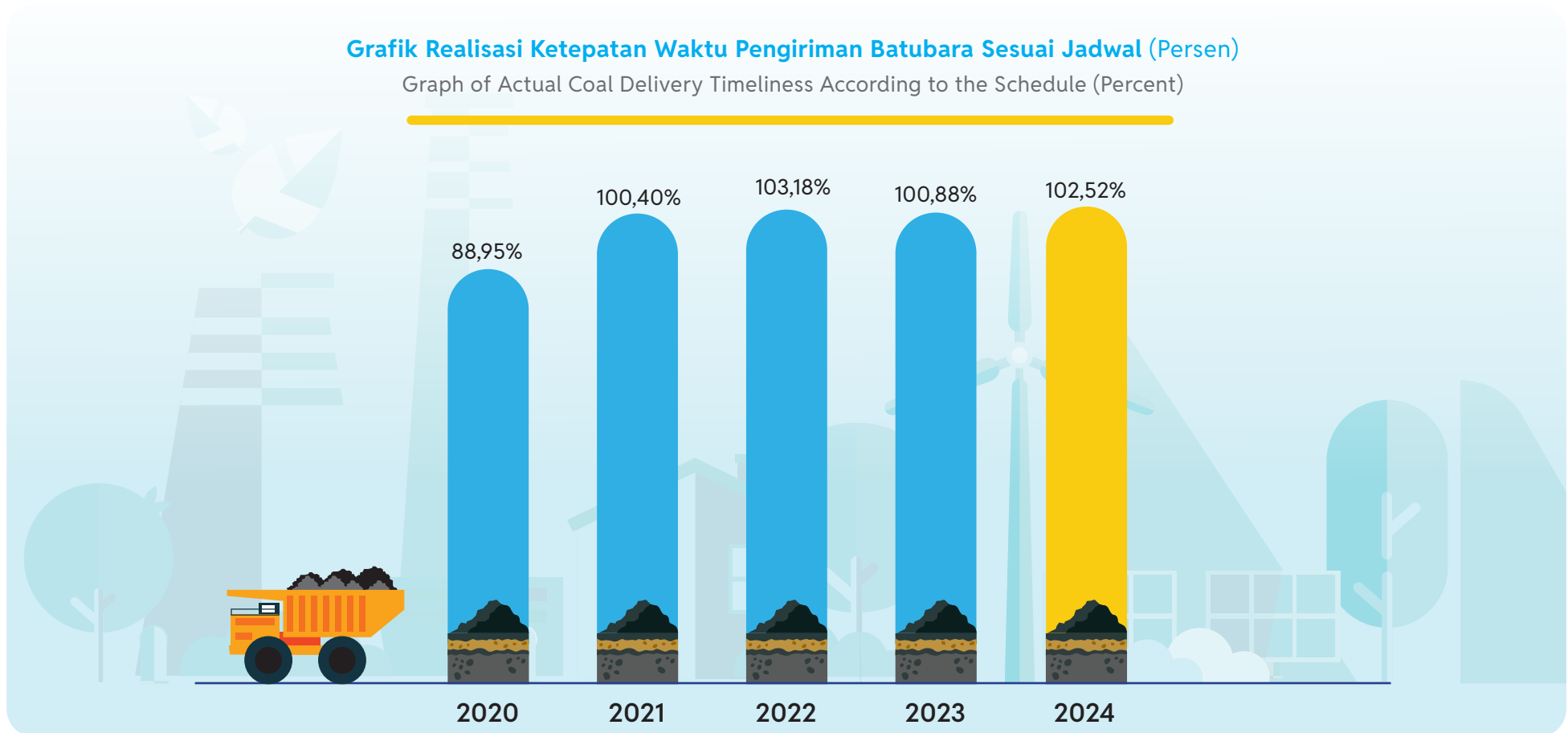
### Realisasi Ketepatan Waktu Pengiriman Batubara Sesuai Jadwal (Persen)

Actual Coal Delivery Timeliness According to the Schedule (Percent)

2020	2021	2022	2023	2024
88,95	100,40	103,18	100,88	102,52

### Grafik Realisasi Ketepatan Waktu Pengiriman Batubara Sesuai Jadwal (Persen)

Graph of Actual Coal Delivery Timeliness According to the Schedule (Percent)





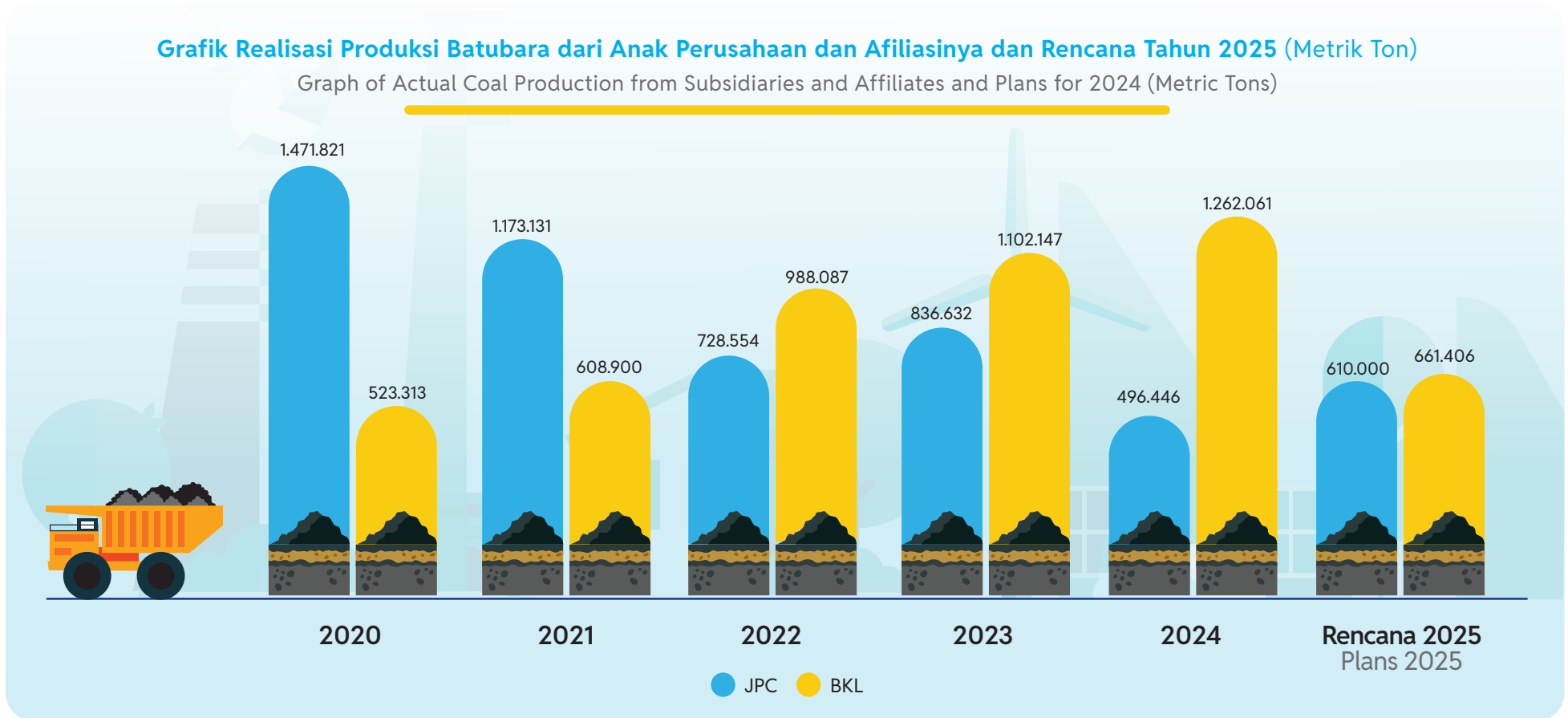
**Realisasi Produksi Batubara dari Anak Perusahaan dan Afiliasinya dan Rencana Tahun 2025 (Metrik Ton)**

Actual Coal Production from Subsidiaries and Affiliates and Plans for 2024 (Metric Tons)

Pelanggan Customer	2020	2021	2022	2023	2024	Rencana 2025 2025 Plan
PT Jambi Prima Coal	1.471.821	1.173.131	728.554	836.632	496.446	610.000
PT Banyan Koalindo Lestari	523.313	608.900	988.087	1.102.147	1.262.061	661.406

**Grafik Realisasi Produksi Batubara dari Anak Perusahaan dan Afiliasinya dan Rencana Tahun 2025 (Metrik Ton)**

Graph of Actual Coal Production from Subsidiaries and Affiliates and Plans for 2024 (Metric Tons)



# Distribusi Gas dan BBM

## Gas and Fuel Oil Distribution

### Gas | Gas

#### Realisasi Pasokan Gas untuk PLN Grup (TBTU)

Realization of Gas Supply for PLN Group's (TBTU)

No.	Uraian Description	2022	2023	2024
1.	PLN Pusat	-	359,91	401,45
2.	PLN Unit	-	0,17	0,17
3.	PLN Batam	-	27,53	23,88
4.	PLN Indonesia Power	-	29,76	29,41
5.	PLN Nusantara Power	-	12,52	12,44
<b>Jumlah Total</b>		-	<b>429,88</b>	<b>467,35</b>

\* Bisnis energi primer gas dimulai pada tahun 2024 /Gas primary energy business starts in 2024

#### Realisasi Pasokan Gas ke PLTG dan PLTGU PLN Grup (Juta Ton)

Realization of Gas Supply to PLN Group's SPP and CCPP (Million Tons)

Tahun Year	Target Target	Pencapaian Achievement
2020	-	-
2021	-	-
2022	-	-
2023	474,11	429,88
<b>2024</b>	<b>474,62</b>	<b>467,35</b>

\* Bisnis energi primer gas dimulai pada tahun 2024 /Gas primary energy business starts in 2024





### Grafik Realisasi Pasokan Gas ke PLTGU PLN Grup (TBTU)

Graph of Realization of Gas Supply to PLN Group's SPP (TBTU)



## Bahan Bakar Minyak (BBM) | Fuel Oil

### Realisasi Pasokan BBM untuk PLN Grup (kiloliter/kL)

Realization of Fuel Oil Supply for PLN Group (kiloliter/kL)

No.	Uraian Description	2022	2023	2024
1.	Biodiesel (B30)	-	2.641.391	2.997.529
2.	High Speed Diesel (HSD)	-	361.691	675.496
3.	Marine Fuel Oil (MFO)	-	221.071	190.671
4.	Industrial Diesel Oil (IDO)	-	-	227
<b>Jumlah Total</b>		-	<b>3.224.153</b>	<b>3.863.923</b>

\* Bisnis energi primer BBM dimulai pada tahun 2023/Fuel Oil primary energy business starts in 2023

### Realisasi Pasokan BBM ke PLTD PLN Grup (kiloliter/kL)

Realization of fuel supply to PLTD PLN Group (kiloliter/kL)

Tahun Year	Uraian Description	Target Target	Pencapaian Achievement
2024	Bahan Bakar Minyak (BBM)/Fuel Oil	3.573.247	3.863.923
	Biodiesel (B30)	2.760.466	2.997.529
	High Speed Diesel (HSD)	673.568	675.496
	Marine Fuel Oil (MFO)	139.212	190.671
2023	Bahan Bakar Minyak (BBM)/Fuel Oil	3.022.519	3.224.153
	Biodiesel (B30)	2.552.995	2.641.391
	High Speed Diesel (HSD)	449.149	361.691
	Marine Fuel Oil (MFO)	178.261	221.071
2022		-	-
2021		-	-
2020		-	-

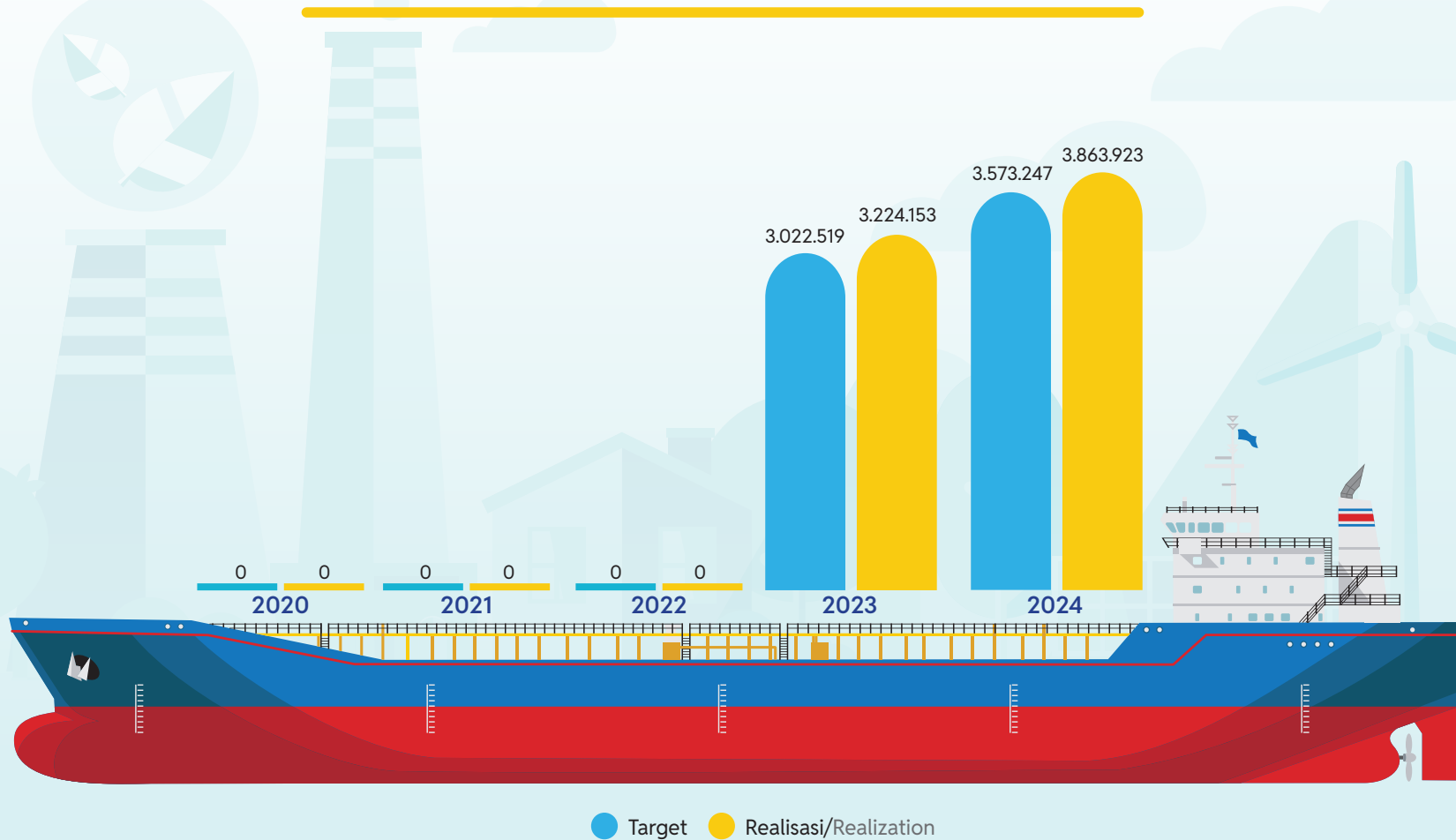
\* Bisnis energi primer BBM dimulai pada tahun 2023 /Fuel Oil primary energy business starts in 2023





### Grafik Realisasi Pasokan BBM ke PLTD PLN Grup (kiloliter/kL)

Graph of Realized Fuel Supply to PLN Group's DPP (kiloliter/kL)



# Distribusi Biomassa

## Biomass Distribution

### Realisasi Pasokan Biomassa (Ton)

Realization of Biomass Supply (Tons)

No.	PLTU (PLN IP, PLN NP, dan PLN IUW) CFPP (PLN IP, PLN NP, and PLN IUW)	2022	2023	2024
1.	PLTU Labuan Banten	-	65.764	71.447
2.	PLTU Sintang	-	9.981	44.845
3.	PLTU Sanggau	-	2.869	23.413
4.	PLTU Barru	-	4.037	20.932
5.	PLTU Asam-Asam	-	7.585	12.188
6.	PLTU Adipala	-	40.745	73.489
7.	PLTU Pelabuhan Ratu	-	47.444	73.904
8.	PLTU Lontar	-	79.428	123.375
9.	PLTU Suralaya 1-7	-	170.007	159.920
10.	PLTU Suralaya 8	-	32.028	59.183
11.	PLTU Berau	-	-	-
12.	PLTU Pangkalan Susu	-	18.059	44.431
13.	PLTU Labuhan Angin	-	-	1.637
14.	PLTU Ombilin	-	3.327	16.072
15.	PLTU Teluk Sirih	-	3.948	27.913
16.	PLTU Tanjung Balai Karimun	-	84	655
17.	PLTU Bengkayang	-	1.176	4.891





### Realisasi Pasokan Biomassa (Ton)

Realization of Biomass Supply (Tons)

No.	PLTU (PLN IP, PLN NP, dan PLN IUW) CFPP (PLN IP, PLN NP, and PLN IUW)	2022	2023	2024
18.	PLTU Indramayu	-	71.833	62.168
19.	PLTU Rembang	-	76.103	118.255
20.	PLTU Paiton 1-2	-	139.834	167.058
21.	PLTU Paiton 9	-	22.741	33.587
22.	PLTU Pacitan	-	51.561	103.956
23.	PLTU Tj Awar-Awar	-	24.845	62.633
24.	PLTU Kendari (NII Tanasa)	-	2.120	17.456
25.	PLTU Anggrek	-	1.031	1.379
26.	PLTU Ampa	-	153	3
27.	PLTU Amurang	-	792	1.199
28.	PLTU Punagaya	-	13.460	16.069
29.	PLTU Bukit Asam	-	11.794	9.972
30.	PLTU Tarahan	-	24.462	60.769
31.	PLTU Sebalang	-	9.259	46.294
32.	PLTU Nagan Raya	-	8.682	16.629
33.	PLTU Tembilahan	-	149	3.793
34.	PLTU Tenayan	-	10.576	34.081
35.	PLTU Pulang Pisau	-	13.460	34.741
36.	PLTU Teluk Balikpapan	-	1.323	913
37.	PLTU Ketapang	-	200	1.068



### Realisasi Pasokan Biomassa (Ton)

Realization of Biomass Supply (Tons)

No.	PLTU (PLN IP, PLN NP, dan PLN IUW) CFPP (PLN IP, PLN NP, and PLN IUW)	2022	2023	2024
38.	PLTU Bangka Baru (Air Anyir)	-	17.952	39.550
39.	PLTU Belitung (Suge)	-	-	5.504
40.	PLTU Ropa	-	133	265
41.	PLTU Sumbawa	-	4.619	5.865
42.	PLTU Kupang Baru (Bolok)	-	2.560	3.486
43.	PLTU Jeranjang	-	8.527	30.989
44.	PLTU Holtekamp	-	1.579	6.312
45.	PLTU Tidore	-	-	439
<b>Jumlah Total</b>		-	1.006.231	1.642.804

\* Bisnis energi primer biomassa dimulai pada tahun 2023/Biomass primary energy business starts in 2023

### Realisasi Jumlah PLTU PLN yang Dipasok Biomassa

Realization of the number of PLN PLTUs Supplied with Biomass

2020	2021	2022	2023	2024
-	-	-	45	45

\* Bisnis energi primer biomassa dimulai pada tahun 2023. Dari 45 PLTU PLN Grup yang dipasok oleh Perusahaan, terdapat 43 PLTU yang berhasil melaksanakan implementasi *co-firing* dan 2 PLTU lainnya baru melaksanakan uji coba *co-firing*. Pada tahun 2024 program *co-firing* biomassa di PT PLN (Persero) dan *subholding* Genco tercatat 45 lokasi PLTU telah memasuki tahap komersial implementasi.

\* Biomass primary energy business starts in 2023. Of the 45 PLN Group's CFPP supplied by the Company, there are 43 CFPP that have successfully implemented *co-firing* and 2 other CFPP have just carried out *co-firing* trials. In 2024, the biomass *co-firing* program at PT PLN (Persero) and its subholding Genco recorded 45 power plant locations that have entered the commercial implementation stage.





### Realisasi Pasokan Biomassa ke PLTU PLN Grup (Juta Ton)

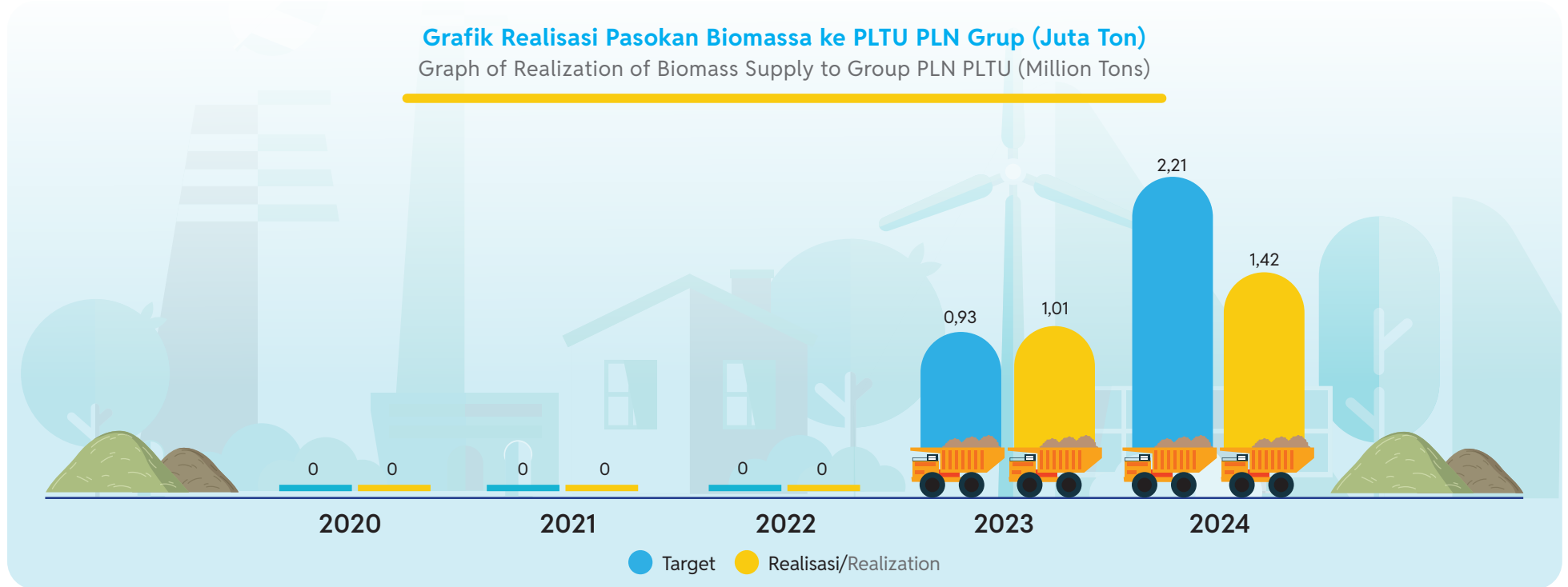
Realization of Biomass Supply to Group PLN PLTU (Million Tons)

Tahun Year	Target Target	Pencapaian Achievement
2020	-	-
2021	-	-
2022	-	-
2023	0,93	1,01
<b>2024</b>	<b>2,21</b>	<b>1,64</b>

\* Bisnis energi primer biomassa dimulai pada tahun 2023/Biomass primary energy business starts in 2023

### Grafik Realisasi Pasokan Biomassa ke PLTU PLN Grup (Juta Ton)

Graph of Realization of Biomass Supply to Group PLN PLTU (Million Tons)



## Rencana Pasokan Energi Primer Tahun 2024

Primary Energy Supply Plan for 2024

Pelanggan Customer		Rencana 2025 2025 Plan
Batubara (MT)	Coal (MT)	99.759.096
Gas (TBTU)	Gas (TBTU)	486,39
Bahan Bakar Minyak (BBM) (kL)	Fuel Oil (kL)	
- Biodiesel/B30 (kL)	- Biodiesel/B30 (kL)	3.091.460
- <i>High Speed Diesel</i> (kL)	- High Speed Diesel (kL)	783.473
- <i>Marine Fuel Oil</i> (kL)	- Marine Fuel Oil (kL)	189.234
Biomassa (ton)	Biomass (ton)	3.000.000



# Kinerja Keuangan

## Financial Performance

### Jumlah Aset, Laba Tahun Berjalan, Penjualan Batubara, dan Penjualan Gas (juta Rupiah)

Total Asset, Profit for the Year, Coal Sales Revenue, and Gas Sales Revenue (million Rupiah)

Uraian Description		2020	2021	2022	2023	2024
Jumlah Aset	Total Assets	7.707.687	10.420.576	12.998.525	17.875.361	25.265.756
Jumlah Laba Tahun Berjalan	Total Profit of the Year	342.111	449.294	878.134	1.452.145	2.237.085
Pendapatan Penjualan Batubara	Coal Sales Revenue	16.350.833	13.845.529	10.620.147	7.613.031	9.885.486
Penjualan Gas	Gas Sales Revenue	-	-	-	5.044.522	24.418.692

\*) Disajikan Kembali/As Restated

### Penjualan Per Segmen (juta Rupiah)

Sales Revenue per Segment (million Rupiah)

Uraian Description		2020	2021	2022	2023	2024
Penjualan Batubara	Coal Sales	16.350.833	13.845.529	10.620.147	7.613.031	9.885.486
Sewa Kapal	Vessel Charter	-	-	4.234.502	5.776.304	5.579.447
Penjualan Gas	Gas Sales	-	-	-	5.044.522	24.418.692
Jasa Manajemen	Management Services	-	-	900	1.109.552	1.436.530
Lain-lain	Others	-	-	731.902	683.900	587.847
<b>Total Penjualan</b>	<b>Total Sales</b>	<b>16.350.833</b>	<b>13.845.529</b>	<b>15.587.451</b>	<b>20.227.309</b>	<b>41.908.002</b>

\*) Disajikan Kembali/As Restated

## Laporan Laba Rugi (juta Rupiah)

Profit and Loss (million Rupiah)

Uraian Description	2020	2021	2022	2023	2024
<b>Penjualan</b>	<b>16.350.833</b>	<b>13.845.529</b>	<b>15.587.451</b>	<b>20.227.309</b>	<b>41.908.002</b>
Beban pokok penjualan	(15.444.354)	(12.937.619)	14.171.589	17.484.806	(37.973.112)
<b>Laba Bruto</b>	<b>906.479</b>	<b>907.910</b>	<b>1.415.862</b>	<b>2.742.503</b>	<b>3.934.890</b>
Beban Umum dan Administrasi	(84.080)	(90.144)	(135.039)	(385.382)	(470.533)
<b>Laba Usaha</b>	<b>822.399</b>	<b>817.766</b>	<b>1.280.823</b>	<b>2.357.121</b>	<b>3.464.357</b>
Penghasilan Keuangan	16.500	16.059	26.034	10.140	27.093
Beban Keuangan	(74.700)	(84.729)	(311.119)	(501.231)	(749.548)
Laba dari Investasi pada Entitas Asosiasi	-	-	39.446	37.067	36.504
(Beban)/Penghasilan Lain-lain, Bersih	(290.838)	(110.760)	42.605	(204.697)	(93.940)
<b>Laba Sebelum Pajak</b>	<b>473.361</b>	<b>638.336</b>	<b>1.077.789</b>	<b>1.698.400</b>	<b>2.684.466</b>
Beban pajak penghasilan	(131.250)	(189.042)	(199.655)	(246.255)	(447.381)
<b>Laba Tahun Berjalan</b>	<b>342.111</b>	<b>449.294</b>	<b>878.134</b>	<b>1.452.145</b>	<b>2.237.085</b>
Penghasilan/(Rugi) komprehensif lain, setelah pajak	(3.784)	(58.200)	8.650	(4.195)	12.585
<b>Jumlah penghasilan komprehensif tahun berjalan</b>	<b>338.327</b>	<b>391.094</b>	<b>886.784</b>	<b>1.447.950</b>	<b>2.249.670</b>

\*) Disajikan Kembali/As Restated



### Laporan Posisi Keuangan (juta Rupiah)

Statement of Financial Position (million Rupiah)

Uraian Description		2020	2021	2022	2023	2024
<b>Aset</b>	<b>Assets</b>	<b>7.707.687</b>	<b>10.420.576</b>	<b>12.998.525</b>	<b>17.875.361</b>	<b>25.265.756</b>
Aset Lancar	Current Assets	4.275.923	4.434.565	4.810.435	8.543.957	14.300.708
Aset Tidak Lancar	Non-Current Assets	3.431.764	5.986.011	8.188.090	9.331.404	10.965.048
<b>Ekuitas dan Liabilitas</b>	<b>Equity and Liability</b>	<b>7.707.687</b>	<b>10.420.576</b>	<b>12.998.525</b>	<b>17.875.361</b>	<b>25.265.756</b>
Ekuitas	Equity	2.380.811	4.001.361	4.794.851	6.241.801	8.490.471
Liabilitas Jangka Pendek	Current Liabilities	4.247.425	4.097.934	3.926.277	6.617.245	11.443.510
Liabilitas Jangka Panjang	Non - Current Liabilities	1.079.451	2.321.281	4.277.397	5.016.315	5.331.775

\*) Disajikan Kembali/As Restated



# Kepegawaian

## Employment

### Jumlah Pegawai Berdasarkan Status Kepegawaian (orang)

Total Employee Based on Employment Status (persons)

Status Kepegawaian Employment Status		2020	2021	2022	2023	2024
Tenaga Ahli	Experts	1	1	-	5	2
Pegawai Tugas Karya	Sedondee	34	40	40	181	184
Pegawai Organik	Organic Employee	73	71	71	67	115
Penugasan Kementerian ESDM	Assignment of the Ministry of EMR	-	-	-	1	-
<b>Jumlah Pegawai</b>	<b>Total Employee</b>	<b>108</b>	<b>113</b>	<b>111</b>	<b>254</b>	<b>301</b>

### Jumlah Pegawai Berdasarkan Jenjang Pendidikan (orang)

Total Employee Based on Educational Level (persons)

Pendidikan Education		2020	2021	2022	2023	2024
Doktor/S3	Doctoral Degree	-	-	-	1	1
Pasca Sarjana	Master Degree	14	16	15	50	55
Sarjana/Diploma 4	Bachelor Degree	88	91	90	177	217
Diploma 3	Diploma	5	5	6	24	26
Sekolah Menengah Atas (SMA)	High School	1	1	-	2	2
<b>Jumlah Pegawai</b>	<b>Total Employee</b>	<b>108</b>	<b>113</b>	<b>111</b>	<b>254</b>	<b>301</b>





### Jumlah Pegawai Berdasarkan Level Organisasi (orang)

Table of Employee Based on Organizational Level (persons)

Level Organisasi Organizational Level		2020	2021	2022	2023	2024
Manajemen Atas	Top Management	4	4	-	5	4
Manajemen Menengah dan Dasar	Basic & Middle Management SPVD	21	25	24	79	85
Supervisor Atas	Top Supervisor	27	28	28	63	62
Fungsional	Functional	56	56	59	107	150
<b>Jumlah Pegawai</b>	<b>Total Employee</b>	<b>108</b>	<b>113</b>	<b>111</b>	<b>254</b>	<b>301</b>

### Jumlah Pegawai Berdasarkan Rentang Usia (orang)

Total Employee Based on Age (persons)

Rentang Usia Age Range		2020	2021	2022	2023	2024
< 25	< 25	19	8	-	-	34
26-35	26-35	56	68	72	143	153
36-45	36-45	18	22	23	88	93
46-55	46-55	14	13	16	23	21
> 55	> 55	1	2	-	-	-
<b>Jumlah Pegawai</b>	<b>Total Employee</b>	<b>108</b>	<b>113</b>	<b>111</b>	<b>254</b>	<b>301</b>

### Jumlah Pegawai Berdasarkan Jenis Kelamin (orang)

Total Employee Based on Gender (persons)

Jenis Kelamin Gender		2020	2021	2022	2023	2024
Laki-laki	Male	86	88	87	184	212
Perempuan	Female	22	25	24	70	89
<b>Jumlah Pegawai</b>	<b>Total Employee</b>	<b>108</b>	<b>113</b>	<b>111</b>	<b>254</b>	<b>301</b>



PT PLN Energi Primer Indonesia  
Centennial Tower, Lantai 7-8,  
Jl. Gatot Subroto No. 24-25  
Setiabudi, Jakarta 12930  
kontak@plnepi.co.id  
(021) 21684025 ; (021) 21684027

